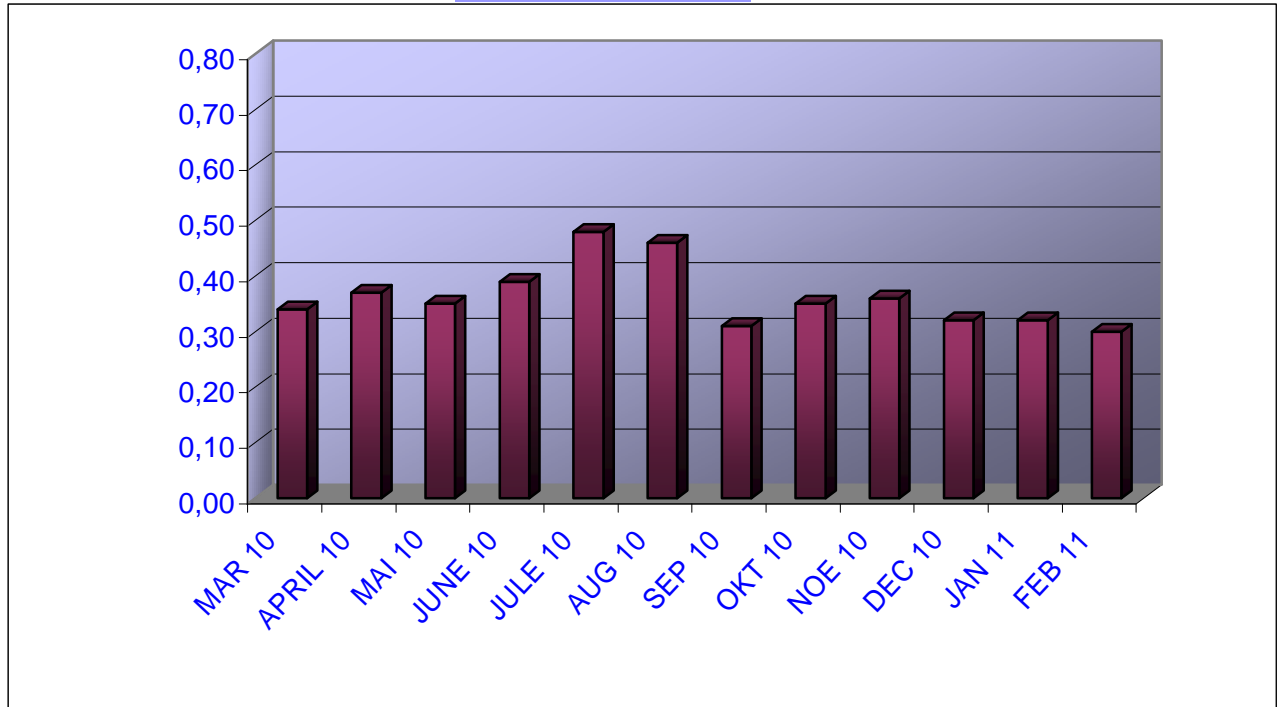


CHANGE OF PRICE AND TOTAL VOLUME FROM MAR 2010 UNTIL FEB 2011

PRICE CLOSURE IN €



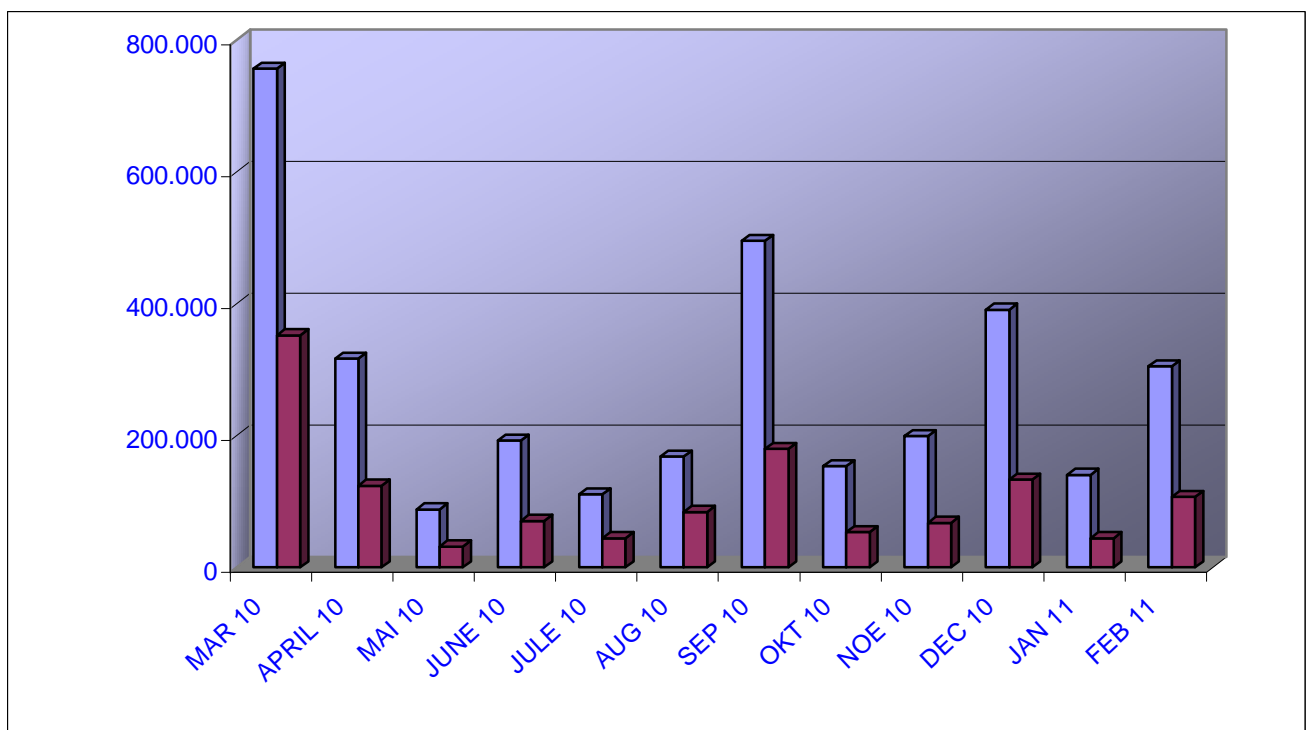
DATE	PRICE*	VOLUME	TURNOVER €*
MAR 10	0,34	757.158	352.534
APRIL 10	0,37	317.161	123.941
MAI 10	0,35	88.333	31.693
JUNE 10	0,39	192.799	70.806
JULE 10	0,48	110.930	44.548
AUG 10	0,46	168.186	84.144

DATE	PRICE*	VOLUME	TURNOVER €**
SEP 10	0,31	495.404	180.079
OKT 10	0,35	153.878	53.499
NOE 10	0,36	199.148	67.812
DEC 10	0,32	391.292	133.408
JAN 11	0,32	140.706	44.380
FEB 11	0,30	305.541	107.377

* It concerns the price closure of the last day of the month

**It concerns the price per month calculated the every day price times the every day volume of closure

VOLUME AND REVENUE IN €

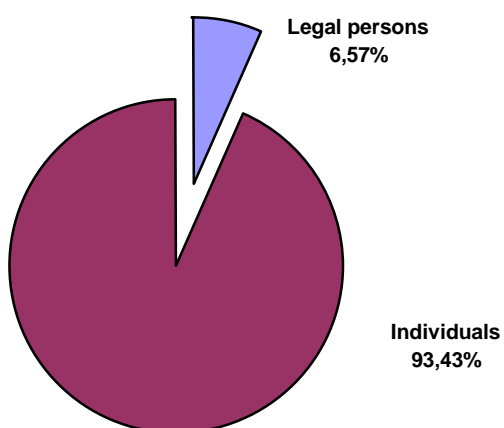


STOCK INFORMATION STOCK HOLDERS

According to our recently data (28/02/2011), the stock holders are:(diagram 1)

a)Shareholders	Legal persons	posession hold	6,57%
b)Shareholders	Individuals	posession hold	93,43%
		Total	100,00%

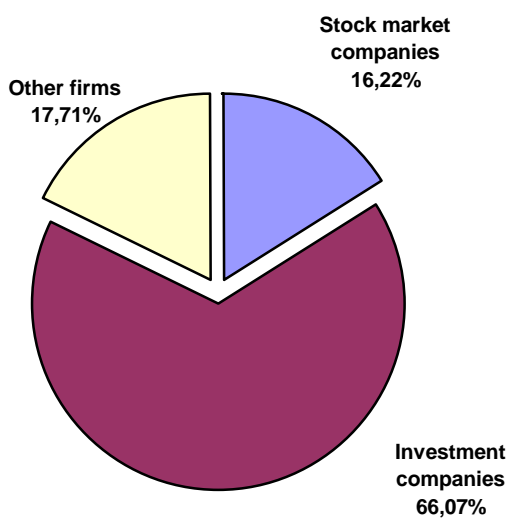
DIAGRAM 1



The analysis of legal persons that hold the 6,79% of the shares,are shown in diagram 2:

Stock market companies	posession hold	16,22%
Investment companies	posession hold	66,07%
Other firms	posession hold	17,71%
	Total	100,00%

DIAGRAM 2



DROMEAS (R) vs GENERAL INDEX FROM 01/03/2010 UNTIL 28/02/2011

